



Electrolux
PROFESSIONAL

**Digital Undercounter
ecostore HP Premium Refrigerated
Counter - 590lt, 12x1/3 Drawers, Remote**

ITEM # _____

MODEL # _____

NAME # _____

SIS # _____

AIA # _____



710092 (EH4RRCCCC)

12x1/3 drawer Refrigerated
Counter 590lt, -2+10°C, AISI
304, remote

Short Form Specification

Item No. _____

AISI 304 stainless steel panels, AISI 430 bottom panel, galvanized back panel. Worktop thickness 50mm. N. 12X1/3 drawers. For connection to a remote refrigeration unit (not included). Operating temperature: -2+10°C. R134a gas in refrigeration circuit.

Main Features

- Adjustable temperature range from -2 °C to +10 °C to suit meat, fish and dairy storage requirements.
- Equipped with Optiflow forced air circulation system for rapid cooling and temperature distribution within the cell.
- 0mm clearance installation space: tower configuration cooling unit guarantee performance with frontal ventilation only; this unique solution allows installation against the wall or side by side with other appliances, even on the cooling unit side to maximize the use of kitchen space.
- Combination of doors and drawers to suit any configuration needed, with the possibility to change the configuration on site. Right cooling unit available on request.
- Anti-tilt runners accept GN 1/1 containers.
- Self closing stainless steel doors (< 90°).
- Certified safety CE requirements.
- Prearranged to fit RS485 port to facilitate connection to a remote computer and integrated HACCP systems.
- Tropicalized unit.

APPROVAL: _____



Experience the Excellence
www.electroluxprofessional.com

Construction

- Worktop in AISI 304 Stainless steel with a 50 mm profile.
- If needed, working top can be removed for easier handling during installation (in case of narrow doors).
- Anti-drip profile on stainless steel worktop edge.
- Interior base with rounded corners, pressed from a single sheet.
- Ease of cleaning and high hygiene standards thanks to the rounded internal corners, the easily removable runners, grids and air conveyors.
- Internal structure with 15 charging positions (3 cm pitch) available to host GN 1/1 grids, ensuring higher net capacity and a greater storage space.
- Internal and external doors, front and side panels and removable worktop in AISI 304 Stainless steel.
- Mounted on Stainless steel legs to give 150 mm clearance for ease of cleaning the floor.
- External bottom panel in stainless steel.
- External back panel in galvanized steel.
- Remote refrigeration unit.
- Developed and produced in ISO 9001 and ISO 14001 certified factory.
- Fault code display.
- Internal dimension of the drawers:
 - models with 2 1/2 drawers: 1st drawer (top drawer) 203x302x521 / 2nd drawer 223x302x521 (HxWxD)
 - models with 3 1/3 drawers: 1st drawer (top drawer) 98x302x521 / 2nd and 3rd drawers 118x302x521 (HxWxD)
 - models with 1/3+2/3 drawers: 1st drawer (top drawer) 98x302x521 / 2nd drawer 333x302x521 (HxWxD)

User Interface & Data Management

- Large digital white-digit display with humidity selection button (3 preset level), internal temperature display and setting, manual activation of defrost cycle and turbo frost cycle (to rapidly cool warm loads).
- Fully compliant HACCP digital control: when temperature exceeds critical limits, acoustic and visual alarms are activated. Up to two months of event are kept in memory.
- Connectivity ready for real time access to connected appliances from remote and data monitoring (requires optional accessory).
- Large digital white-digit display with cabinet temperature display and setting, and possibility to select the desired levels of humidity. Bluetooth technology included allows to keep HACCP historical data and download them through the app.
- Electrolux Professional Fridge Control APP makes the life easier for our customers:
 - Monitor safety of preservation process thanks to HACCP data & alarms for precise control
 - Save time and easy data management having the possibility to send the HACCP information in excel format directly to e-mail address
 - Quick operations: set the cabinet temperature/humidity/ turbocooling and set date/hour

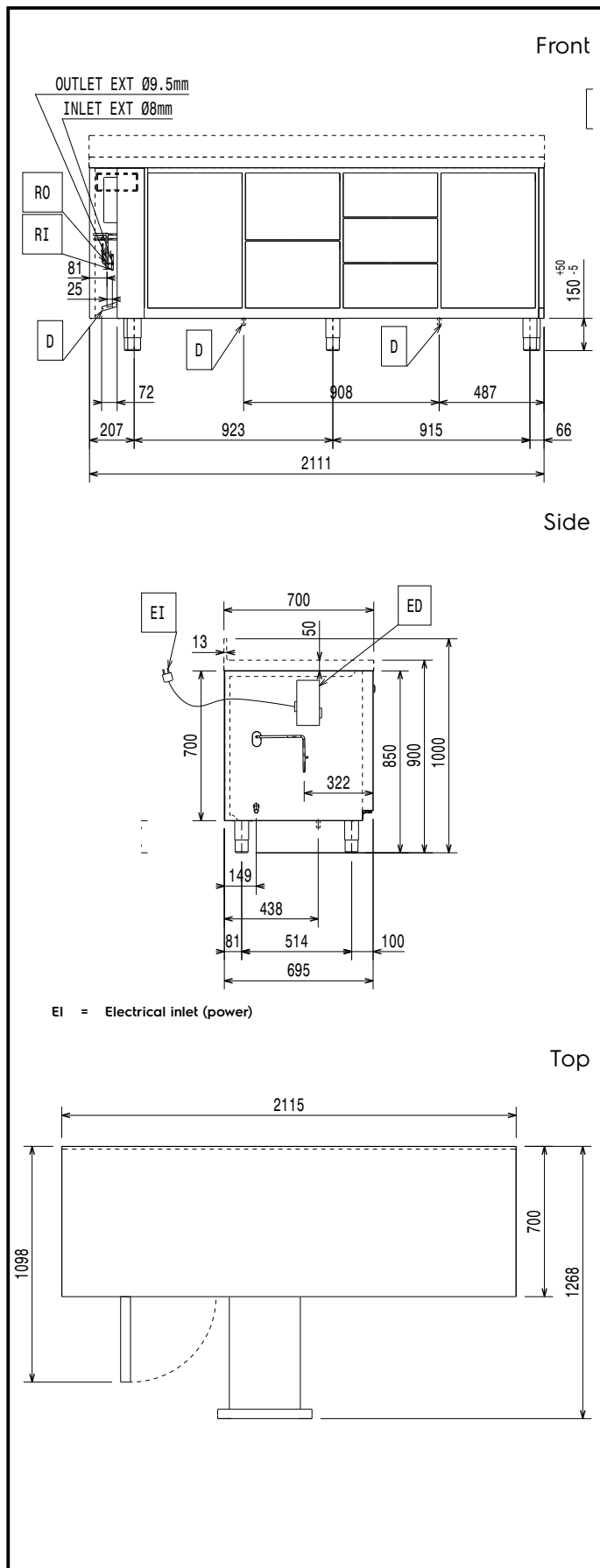
Sustainability



- Fitted with 90 mm thickness of cyclopentane insulation for best insulating performance (thermal conductivity: 0,020 W/m*K) and lowest environmental impact (GWP=3).
- Removable triple-chamber balloon magnetic gasket to improve insulation and reduce energy consumption and ease of cleaning.
- Frost Watch Control starts automatically the defrosting process only when needed and ends once ice is melted, improving energy efficiency results.

Optional Accessories

• Automatic defrost with waste evaporation	PNC 880028	<input type="checkbox"/>
• Remote unit for refrigerators and refrigerated counters, -2+10°C, R134a	PNC 880231	<input type="checkbox"/>
• 2x½ drawer kit for refrigerated counters	PNC 881058	<input type="checkbox"/>
• 3x1/3 drawer kit for refrigerated counters	PNC 881059	<input type="checkbox"/>
• 1/3 and 2/3 bottle drawer kit for refrigerated counters	PNC 881071	<input type="checkbox"/>
• 1/1 GN plastic container, H=65 mm	PNC 881110	<input type="checkbox"/>
• 1/1 GN plastic container, H=100 mm	PNC 881111	<input type="checkbox"/>
• 1/1 GN plastic container, H=150 mm	PNC 881112	<input type="checkbox"/>
• Kit 710 body height for 4-door counters - HP - remote	PNC 881148	<input type="checkbox"/>
• Lock for refrigerator/freezer counters with 4 compartments - h700mm (can be used in kit for Marine conversion)	PNC 881244	<input type="checkbox"/>
• IoT module for refrigerated cabinets and counters	PNC 881298	<input type="checkbox"/>



Electric

Supply voltage:	220-240 V/1 ph/50/60 Hz
Electrical power, max:	0.03 kW
Defrost Power:	0.22 kW
Plug type:	CE-SCHUKO

Key Information:

Net Volume:	188 lt
Door hinges:	
External dimensions, Width:	2115 mm
External dimensions, Depth:	700 mm
External dimensions, Height:	900 mm
Net weight:	139 kg
Shipping volume:	1.87 m ³
Depth with doors open:	1110 mm
Height adjustment:	-5/50 mm
Gross capacity:	590 lt

Refrigeration Data

Control type:	Digital
Operating temperature min.:	-2 °C
Operating temperature max.:	10 °C
Refrigeration type:	R134a; R513A; R426A
Operating mode:	Ventilated
Insulation:	90 mm (Cyclopentane)
Suggested refrigeration power:	368 W
Condition at evaporation temperature:	-10 °C
Condition at condensation temperature:	55 °C
Condition at ambient temperature:	32 °C
Connection pipes (remote) - outlet:	9.5 mm
Connection pipes (remote) - inlet:	8 mm

ISO Certificates

ISO Standards:	ISO 9001; ISO 14001; ISO 45001; ISO 50001
----------------	---

Sustainability

Current consumption:	0.3 Amps
GWP Index:	1300